

## EXHIBITIONS

**Robert Peterson**  
*The Quiet Spirit*  
and  
**Donna Phipps Stout**  
*Top of the Table*  
March 15 - May 3, 2008

**Raul Diaz**  
*Contemplación*  
*Continuada*  
and  
**Manuel Reyna**  
*Escenas de Cordoba*  
May 9 - July 12, 2008

**The Summer Show**  
*Survey of Gallery Artists*  
July 19 - Sept. 6, 2008

**Paul Jenkins**  
*Phenomena*  
Nov. 8, 2008 - Jan. 3, 2009

## ART FAIRS

**Art Chicago**  
The Merchandise Mart  
Chicago, IL  
April 25-28, 2008

**Art Hamptons**  
Bridgehampton Historical  
Society Grounds  
Southampton, NY  
July 11-13, 2008

**Art 20**  
Park Avenue Armory  
New York, NY  
November 14-17, 2008

**Art Miami**  
Wynwood Art District  
Miami, FL  
December 3-7, 2008



Vol. 9 No. 1 April 2008

# JERALD MELBERG GALLERY NEWSLETTER

THE CAROLINAS' PREEMINENT GALLERY FOR CONTEMPORARY ART

## Gallery Now Represents Estate of James Rosati

Jerald Melberg Gallery is honored to now represent the Estate of James Rosati, one of America's most accomplished mid-20th century sculptors. The gallery will maintain an inventory of both sculpture and works on paper by this true American master. An exhibition will be scheduled within the next year.

Rosati was born in 1911 in Washington, Pennsylvania, and died in 1988 in New York City. He was a charter member of the Eighth Street Club and the New York School of Abstract Expressionism. Counted among his closest friends were Philip Pavia, Willem de Kooning, Franz Kline, Vicente and David Smith.

Rosati is perhaps best known for his sculptures of large blockish forms combined in elegant relationships, particularly the stainless steel *Ideogram* that stood over 23 feet tall on the plaza between Towers 1 and 2 of the World Trade Center in New York City. About forty monumental pieces of sculpture are located in the United States and abroad, including the 16 foot tall stainless steel sculpture in front of the Charlotte Plaza office tower.

On Rosati's abstract sculpture, Albert Elsen wrote, *It is the modern sculptor's hard-earned right to bring into being a previously unknown entity with its own character. If his work inspires various interpretations and, so long as other intentions are not ascribed to him, the sculptor is content: his art has touched the imagination and life of strangers.* When asked to explain his work, the artist replied in part, *I don't want my work to be obvious or even reasonable, but to have a kind of spiritual mystery you can't put into words.*

UNTITLED (STANDING RELIEF) 1980-81  
James Rosati  
Painted Aluminum  
42 x 48 x 6 inches



MEMBER  
FINE ART DEALERS  
ASSOCIATION  
FADA  
625 South Sharon Amity Road  
Charlotte, NC 28211

JERALD MELBERG  
GALLERY

## News and Reviews

*American Art Collector* magazine featured **Wolf Kahn** not once, but twice in 2007 in articles related to his relationship with Jerald Melberg Gallery, as well as in response to his solo exhibition *Celebrating 80 Years* at the gallery last fall.

In the September issue, Eric Cohler wrote, *Wolf Kahn is one of the most celebrated American painters working today. His sense of light, of the play of sunlight and shadow across a field then across his canvas is incredible not only for its subtlety but for its luminosity.*

In the November issue, Jerald was quoted: *To have known this man as a friend for almost 30 years has been a challenge—a challenge to stay astride of his energy, his intellect and his voracious appetite for all things worthwhile. To have represented Wolf Kahn, the artist, for almost 25 years has been a privilege—a privilege to have been surrounded daily with his art and a privilege to have shared it with countless others.*

Last summer **Christopher Clamp**'s solo show at the Sumter County Gallery of Art was reviewed by Jeffrey Day in *The State* (Columbia, SC) paper. In a conversation with the artist, Clamp states, *The objects are very important to me, but I don't want to just paint the object. I want to give it a mood and a soul, and I want to make the audience realize that there is a story unfolding.*

In the spring of 2007, Clamp was also reviewed locally by Scott Lucas in *Creative Loafing*. Lucas wrote, *Christopher Clamp is Charlotte's newest secret revealed. Clamp paints quiet, moving tributes to remembered times and places and people. His vehicle for memory transport is a single object finely rendered in oil paint.*



*Any Where But Here, 2003-04, Oil on Panel, 14 x 36 inches*



*Ode V, 1980-81, Stainless Steel, 46 x 22 1/2 x 20 1/2 inches*

*It should be like a great piece of music: every time you play it, you're astounded by it, you're hit by it the first time because of a particular sound, the chemistry of your ears, and so on, and the sound is perfect, but every time you play it, it shows you more.*

- James Rosati, on experiencing his sculpture

## GALLERY NEWS



### Robert Peterson *The Quiet Spirit*

Robert Peterson's still life pastels, currently on view in an exhibition titled *The Quiet Spirit*, are quintessential examples of Luminism with their intense drama of light and shade. Depicting the play of light across the simplest forms in minimal arrangements, his images possess a mysteriously perceptible air of silence. In doing so they transcend photorealism to create an emotional response to their shape, texture and composition.

Since his first exhibition in 1969, Peterson has been honored with well over one hundred gallery and museum exhibitions across the United States. *The Quiet Spirit* will remain on view through May 3, both at the gallery and online at [www.jeraldmelberg.com](http://www.jeraldmelberg.com).

Robert Peterson  
**FOUR APPLES STACKED** 2007  
Pastel on Paper  
25 1/4 x 22 1/2 inches

*There are lessons for learning here: ordinary fruits, vegetables, table things - these hold more than the corporal statement. Working in the silent world of Robert Peterson they become altars of beauty. And the more mundane the model for painting, the more haunting the portrait.*

- Grady Harp



### Donna Phipps Stout *Top of the Table*

Jerald Melberg Gallery is currently exhibiting recent still life paintings by Kentucky native Donna Phipps Stout. Stout's atmospheric paintings evoke a sense of poetic mystery. Her traditional representations of flowers, fruits and vessels arranged on linen-draped tabletops suggest that some kind of previous social interaction has taken place. Stout says, *Sometimes I want the seemingly random arrangement of these imperfect objects to hint at the presence of someone or something just beyond view.* She believes a good painting, like a good poem, should allow for investigation, not just observation.

*Top of the Table* will remain on view through May 3, both at the gallery and online at [www.jeraldmelberg.com](http://www.jeraldmelberg.com).

Donna Phipps Stout  
**KEEP IT SIMPLE** 2008  
Oil on Panel  
32 x 40 inches

625 SOUTH SHARON AMITY ROAD CHARLOTTE NC 28211 704.365.3000 704.365.3016 FAX M-SAT 10-6

## ART FAIRS

### Art Chicago April 25-28

*Art Chicago* 2008, America's longest running international contemporary and modern art fair, brings together a select group of the world's finest established and emerging galleries. Jerald Melberg Gallery is pleased to once again be included among them.

*Art Chicago* will take place at the famed Merchandise Mart, April 25-28. We hope you will have opportunity to visit our booth at the Mart!



Jerald Melberg Gallery booth at Art Chicago 2007.

### Art Hamptons July 11-13

Jerald Melberg Gallery announces its participation in a newly formed art fair, *Art Hamptons*. Designed as the Hamptons premier art event, forty notable art dealers will offer an extraordinarily rich assemblage of museum quality art from the 20th and 21st Century.

*Art Hamptons* will be held at the Bridgehampton Historical Society Grounds July 11-13. For further information, please visit their web site at [www.arthamptons.com](http://www.arthamptons.com).

### Art 20 November 14-17

Jerald Melberg Gallery will participate in **ART 20**, one of the top annual New York art fairs. This event showcases important works of art from the early 1900s to the present.

The show will take place November 14 through 17 in the Park Avenue Armory. Please look for us in booth #B10. You may also view works by all our gallery artists anytime by visiting us online at [www.jeraldmelberg.com](http://www.jeraldmelberg.com).



Jerald Melberg Gallery booth at Art Miami 2007.

### Art Miami December 3-7

Once anchoring the January art calendar, after nearly two decades the New Art Miami debuted last December in the Wynwood Art District. Jerald Melberg Gallery is delighted to participate again in 2008.

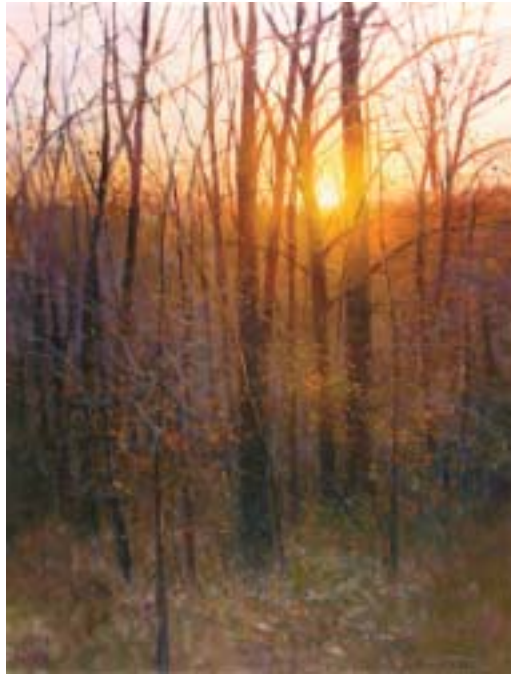
*Art Miami* brings together nearly 100 galleries from 17 countries, many of which are leading, long-time experts in their areas of specialization. The strengths of the show lie in the quality and diversity of its offerings: contemporary work, modern masters and photography.

## GALLERY ARTISTS

Alice Ballard  
Charles Basham  
Romare Bearden  
Ernesto Berra  
Oscar Bluemner  
Stanley Boxer (Estate)  
Thomas Buechner  
Dale Chihuly  
Christopher Clamp  
Raul Diaz  
Daniel Douke  
Janet Fish  
Rick Horton (Estate)  
Paul Jenkins  
Wolf Kahn  
Ida Kohlmeyer (Estate)  
Robert Kushner  
Richard Mayberry  
Thomas McNickle  
Kimo Minton  
Robert Motherwell (Estate)  
Carol Mothner  
Robert Peterson  
Paul Resika  
Manuel Reyna  
James Rosati (Estate)  
Brian Russell  
Brian Rutenberg  
Richard Stenhouse  
Donna Phipps Stout  
Ramon Urbán  
Emily Wilson

GALLERY@JERALDMELBERG.COM WWW.JERALDMELBERG.COM

## RECENT ARRIVALS



Thomas McNickle  
**SUNSET IN THE HIGH WOODS** 2008  
 Oil on Canvas  
 48 x 36 inches



Robert Motherwell (1915-1991)  
**UNTITLED (from the Joyce Sketchbook)** 1985  
 China Marker on Paper  
 5 x 3 inches

© copyright 1985 Dedalus Foundation, Inc./Licensed by VAGA, NY



Christopher Clamp  
**SUGAR** 2007  
 Oil on Panel  
 16 x 20 inches

## GALLERY NEWS

### *JMG Welcomes Robert Kushner*

Jerald Melberg Gallery proudly welcomes Robert Kushner to our roster of artists.

Kushner, who emerged in the early 1970s as a performance artist, is well known for his richly textured and opulent paintings of flowers, which have been his main concentration since the late 1980s. The artist says, *Gold leaf made its way into my paintings, and my subject matter began to shift from figures to flowers and plant forms...Japanese influences slumbered and meshed with other sources for a few years. However, as a counterbalance, Matisse, Bonnard, Klimpt, O'Keefe and Demuth remained (and still remain) important sources for me.*

Kushner has exhibited extensively, and his work can be found in the collections of many prestigious institutions, including the Museum



Robert Kushner, **CELESTIAL BLUE III**, 2007, Acrylic, Oil & Gold Leaf on Canvas, 30 x 48 inches

of Modern Art, the Metropolitan Museum of Art and the Whitney Museum of American Art in New York, the San Francisco Museum of Modern Art, the National Gallery of Art in Washington D.C., the Tate Gallery in London and the Uffizi Gallery in Florence.

We encourage visitors to stop by the gallery soon and request to see these exciting new paintings and works on paper by Robert Kushner.

### *Raul Diaz and Manuel Reyna*

Fellow countrymen Raul Diaz and Manuel Reyna will exhibit together at Jerald Melberg Gallery May 9 through July 12.

Raúl Díaz was born in 1952 in Cordoba, Argentina, where he continues to live and work. Although Díaz studied architecture, he could not avoid the overwhelming call within himself to be a painter. Self-taught as such, he is well known in South America and has gained significant recognition in Europe and the United States for his compelling, dream-like paintings and sculpture.

Considered a national treasure in his homeland, Manuel Reyna was also born in Cordoba, Argentina, in 1912, where he lived and worked until his death in 1989. Trained as a brick mason and self-taught as an artist, Reyna was honored by the Museo Caraffa in Cordoba with a major career retrospective in 2004.

To view a selection of works by both of these artists, please visit our web site at [www.jeraldmelberg.com](http://www.jeraldmelberg.com).



Raul Diaz, **FIGURA EN EL AGUA**, 2004  
 Acrylic on Wood Panel, 35 7/8 x 23 5/8 inches



Manuel Reyna, **GAPONES A ORILLAS DEL SUGUIA**, 1989  
 Oil & Mixed Media on Board, 9 3/8 x 11 7/8 inches

RECENT ARRIVALS



**THE SWING** 1984  
Watercolor on Paper  
34 x 18 inches



**GLASSED CANDY** 1980  
Color Lithograph on Paper  
30 x 22 inches



Robert Kushner  
**AGAPANTHUS III** 2007  
Ink, Oil, Gold & Silver Leaf on Japanese Paper  
34 3/4 x 25 1/2 inches



Robert Kushner  
**AGAPANTHUS IV** 2007  
Ink, Oil & Gold Leaf on Japanese Paper  
34 1/2 x 25 3/4 inches



Romare Bearden  
**UNTITLED** c. 1969-70  
Unique Collagraph  
19 x 24 3/4 inches (paper)



Wolf Kahn  
**MAGENTA GLOW AT FOREST'S EDGE** 1999  
Oil on Canvas  
26 x 35 inches